

FIBER AUTO INSPECTION SYSTEM

FAIS

KEY FEATURES

- Providing Triple-A Performance (Auto-Focusing, Auto-Positioning and Auto-Inspection)
- Fast and constant inspection by IEC standards
- Inspect polishing holder (Matrix, Dual Matrix, and Circular)
- Optional Rotator mount for MT ferrule polishing holder
- Support Square, Circular or other shapes of polishing holder
- Intuitive distinguish pass/fail result (Graphic indicator)
- Enables data management (Reporting, Statistics)
- Barcode scanning for automation (AoS option) inspection
- Support central data collection



APPLICATIONS

- Pre-inspection after polished ferrule at manufacturer
- Final inspection of Passive components & assembly
- Detecting contamination or scratch of end face ferrule
- Management of polishing holder qualities

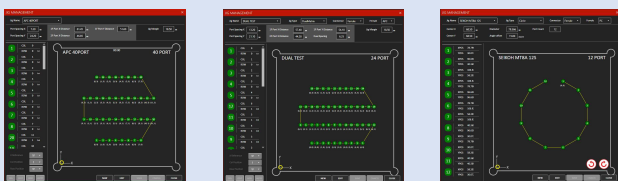
FIBER AUTO INSPECTION SYSTEM(FAIS) is an automated inspection system that can perform the inspection by polishing Holder after polished passive elements such as ferrules, optical connectors/cable. optical transceiver / receptacle module and passive/active optical device. And it's providing innovative efficiency in the manufacturer and production of optical passive components/devices.

FAIS is supporting auto focus, auto centering and auto positioning without any limitations - Support all type of polishing holder shape with optical components. All inspection is compliance with IEC standards or customized standards.

The **Central Data Management (CDM)** tool is help to automated acquisition of entire inspection results from multiple FAIS's via network. Also, it can trace/monitoring not only end face quality but also polishing holder quality. Management able to access CDM to get all production status – Input Vs Output, Failure rates per type, Failure rates per holder and so on.

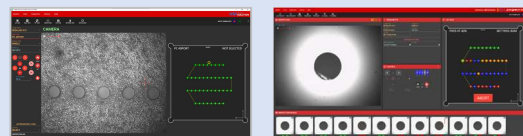
POLISHING HOLDER MANAGEMENT

Polishing holder profile is allowed to make holder
 Easy import/export polishing holder profiles
 Supporting square or round shape mount
 Rotation Mount for MT is supporting square shape



PERFORMANCE

Auto positioning and auto inspection
 Repeat inspection if required
 Auto Focusing per port
 Positioning calibration per type of polishing holder
 Support variable shape of the polishing holder
 Less than 6s per Port for Inspection, Positioning, Auto Focusing and Save a result
 Inspection Profile according to IEC – Create/Edit/Delete



GENERAL SPECIFICATIONS

PARAMETER	SPECIFICATION	NOTE
Dimension (mm)	320 x 320 x 300	
Weight (Kg)	Approx. 15.00	
Operational Temp (°C) / Hum (%)	-10 to 50	
Storage Temp (°C) / Hum (%)	-15 to 65	
Power Input	24VDC via AC/DC Adaptor	AC Input: 100 to 240VAC

TECHNICAL SPECIFICATIONS

PARAMETER	SPECIFICATION	NOTE
Inspection Area (X, Y)	130mm x 130mm (depending on the type of mount)	
Method of Focus	Liquid Lens	
Max Focusable Distance	< 1.00 mm	
Inspection Duration	Min. 3 minutes @ 40 ports (depending on the type of products)	
FOV (Field of View)	Depending on Objectives	
Min. Resolution	7.94µm@X/Y Axis, 3.18um@Z Axis	
Focusing Time	Typically, <2s	
Holder (Products) Profiles	Acceptable all types of polishing Holder	

ORDERING INFORMATION

PART NO	DESCRIPTIONS	NOTE
FAIS-01-00 ⁽¹⁾	Fiber Auto Inspection System with Inspection only Included Square shape mount, 24VDC AC/DC Adaptor, USB3.0 Cable, Installation USB memory stick	Requires, External PC or Laptop for operation (Windows Based)
FAIS-02-00 ⁽¹⁾	Fiber Auto Inspection System with Inspection only Included Round shape mount, 24VDC AC/DC Adaptor, USB3.0 Cable, Installation USB memory stick	
FAIS-03-00 ⁽¹⁾	Fiber Auto Inspection System with Inspection only Included Rotation (Square) mount, 24VDC AC/DC Adaptor, USB3.0 Cable, Installation USB memory stick	
FAIS-04-00 ⁽¹⁾	Fiber Auto Inspection System with Inspection only Included Customized shape mount, 24VDC AC/DC Adaptor, USB3.0 Cable, Installation USB memory stick	
FAIS-M-01	Polishing Holder Square Shape Mount	
FAIS-M-02	Polishing Holder Round Shape Mount	
FAIS-M-03	Polishing Holder Rotation (Square) Mount	
FAIS-M-04	Polishing Holder Customized Shape Mount (only metal)	
FAIS-D-01 ⁽²⁾	Central Data Management Platform for multiple FAIS's (Up to 10xFAIS)	

(1) Requires, External PC or Laptop for operation (Windows Based)

(2) Require server or equivalent equipment